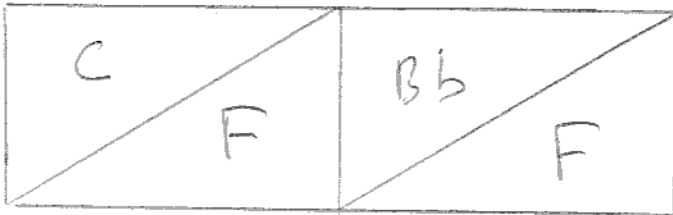


(BLUES BROTHERS)

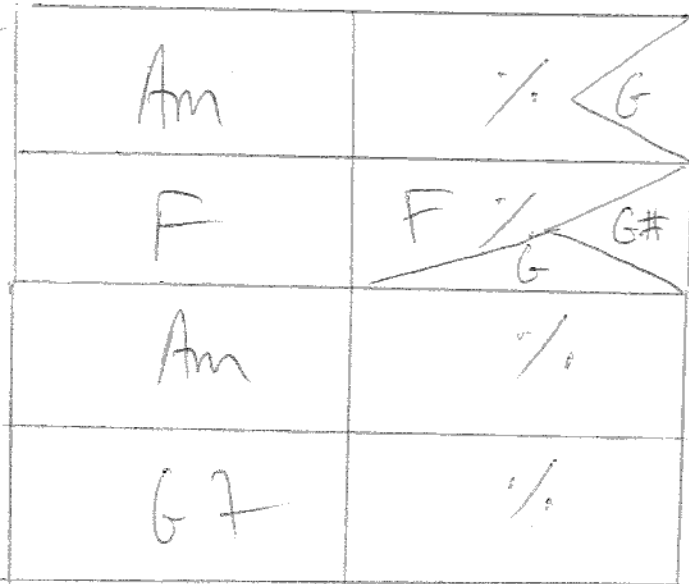
EVERY BODY NEEDS SOMEBODY

CHORO I

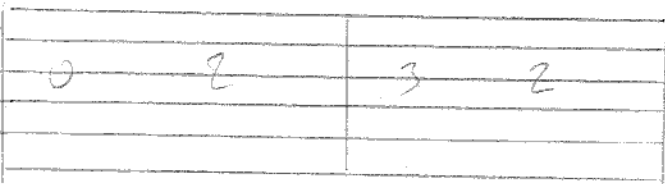
Riff
Complet



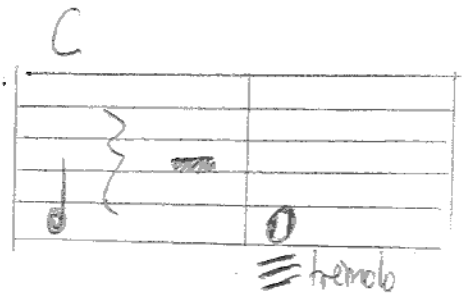
Refrain



PONT



FIN



STRUCTURE:

- | | | | |
|----------------|-----|------|-----|
| Riff | x4 | Riff | x4 |
| Riff | x11 | 4 | |
| Riff | x13 | PONT | x4 |
| <u>Refrain</u> | | | |
| Riff | x8 | Riff | x22 |
| <u>Refrain</u> | | FIN! | |