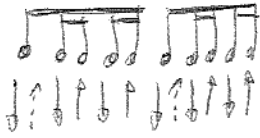


(Nick CAVE)

Henry Lee



6/8	A(2)m	%	%	%
	A(2)m	%	%	
	D(2)m	%	%	%
	A(2)m	G	%	
3/8	C	Am	Dm	to ϕ
	Dm	6/8 Am	%	to ϕ x4
ϕ 6/8	Dm / Am			
	C	Am	Dm	Dm / Am x4