

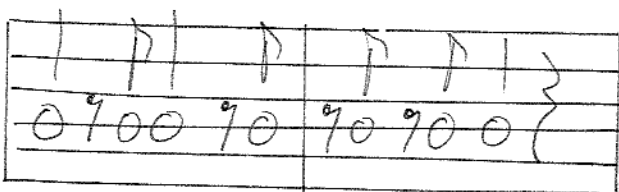
ÇA IRA



D	÷	G	÷	D	÷	G	÷
Em	÷	A	÷	Em	÷	A	÷
D	÷	G	÷	D	÷	G	÷
Em	÷	A	÷	Em	÷	A	÷
D	÷	A	÷	Em	÷	A	÷

to \emptyset

x2



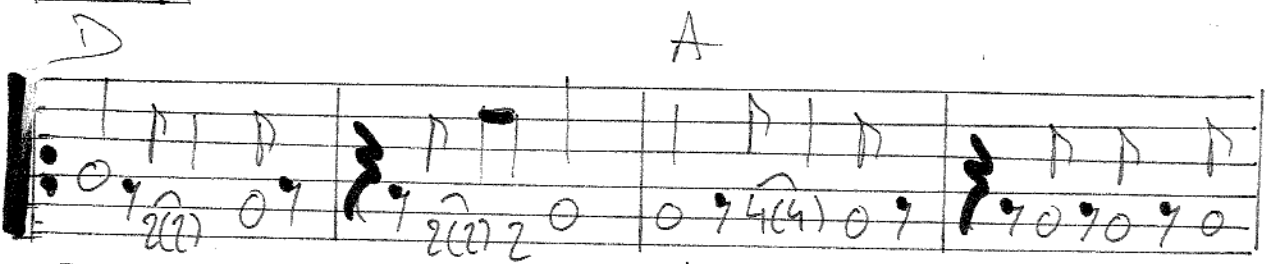
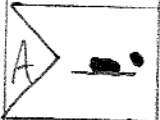
b. S.



D	÷	A	÷	Em	÷	A	÷
G	÷	D	A	x3			

x2

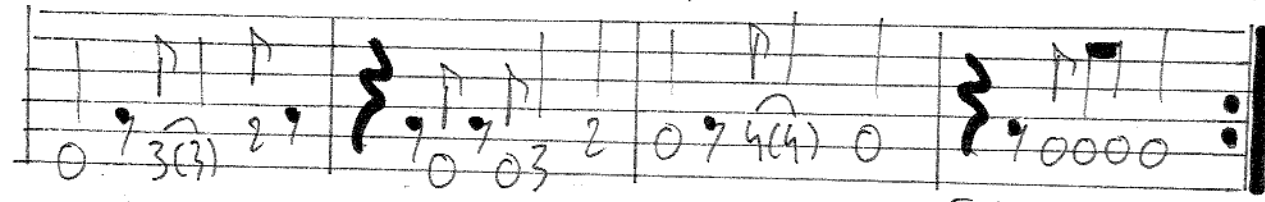
x3



Em

A

x3



FIN