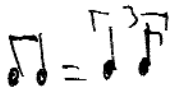


# LES HISTOIRES d'A. (G1)

(CRITANITSOUKO)



4 4	E	Am	D	G	x3
	E	Am	D	G	x4 x4+4 $\oplus$
$\oplus$	C# D C# D C#    D C# D C#    D C# D C#    D C# 				
	C# D C# D C#    D C# 	E	A		x2 x4 (on $\oplus$ )
	C / FIC	CΔ / FIC	/	/	x2 $\oplus$
	E	Am	D	G	
	C	F	B	E7	
	Am7	Dm7	G7	CΔ	} x2
	FΔ	B7	E7		
	A E7				

# LES HISTOIRES d'A. (G2)

(RITA NITSUKO)

♩ = 1 3 7

x2

x4

Handwritten musical notation for the first system. It consists of two staves. The top staff has rhythmic patterns of vertical strokes. The bottom staff contains numbers: 7777, 5555, 5555, 3333, 7777, 7777, 5555, 5555, 7777, 7777, 5555, 5555. There are repeat signs and a key signature change to G major (one sharp).

x2

Handwritten musical notation for the second system. It consists of two staves. The top staff has rhythmic patterns of vertical strokes. The bottom staff contains numbers: 4545, 4545, 4545, 4545, 4545, 4545, 7777, 5555. There are repeat signs and a key signature change to G major.

Handwritten musical notation for the third system. It consists of two staves. The top staff has melodic lines with slurs and notes. The bottom staff contains numbers: 3, (3) 3 5 3, 3 3, (3) (3) 3 5 7 3 7 3, (3) 3 0 3 5 0 3 3, (3) 3 7 3. There are repeat signs and a key signature change to G major.

x4x4

x4

Handwritten musical notation for the fourth system. It consists of two staves. The top staff has rhythmic patterns of vertical strokes. The bottom staff contains numbers: 7777, 7777, 5555, 5555, 4545, 4545, 4545, 7777, 5555. There are repeat signs and a key signature change to G major.

Handwritten musical notation for the fifth system. It consists of two staves. The top staff has melodic lines with slurs and notes. The bottom staff contains numbers: 3 3, (3) (3) 3 5 7 3 3, (3) 3 7 7 3 3, (3) 0 3 5 0 3 3, 7 3 0 3 (3) (3). There are repeat signs and a key signature change to G major.

Handwritten musical notation for the sixth system. It consists of two staves. The top staff has rhythmic patterns of vertical strokes. The bottom staff contains numbers: 7777, 7777, 5555, 5555, 3333, 3333, 2222, 2222, 7777, 5555, 5555, 3333, 3333, 2222, 2222, 2. There are repeat signs, a key signature change to G major, and a final measure with a 2 and a sharp sign.