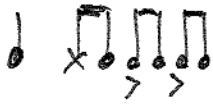


(PRINCE ROYCE)

CULPA AL CORAZON



4	C	Am	F	G	x2
S.	C	Am	F	G	x2
	Em	Am	F	G	
	Em	Am	F	G \rightarrow	\oplus
	C	Am	F	G	x4

G S.

\oplus	C	Am	F	G	x2
----------	---	----	---	---	----

A

	F	1/2	Am	1/2	x2
	F	1/2	G	G \rightarrow	
	C	Am	F	G	x5
	C	Am	F	\rightarrow	
	F	1/2	Am	1/2	x2 and fade